

# Batumi

**TYPE OF APPLICATION:** Stucanet - facing

**LOCATION:** Tiflis/Georgia

**DATE OF CONSTRUCTION:** 2008

**ENGINEER/ARCHITECT:** Ranft

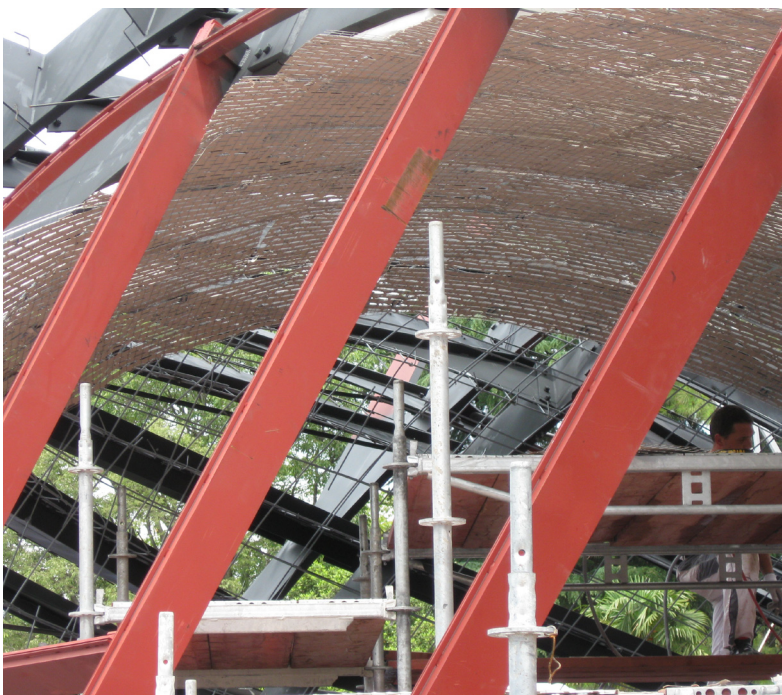
**CONTRACTOR/PLASTERER:** Ranft



press - centre

## Description of the project

the government of Georgia asked for construct a new press-centre with spectacular forms. This design was only possible with Stucanet



Stucanet on metal frame

## Solution with Bekaert Plastering Products

**Type of product:**

**Stucanet S**

**Type of application:**  
Stucanet facing on metal fr

**Type of plaster:**  
calcium-cement

**Project size:**  
2500 m<sup>2</sup>